



# I AM DRAGON

by Alexandra Davidoff

## SIZE

one size

## FINISHED MEASUREMENTS

Length: 32"/82cm & Width:  
9"/23cm after blocking

## YARN

1 skein of Ancient Arts Merino  
Silk Sock Yarn; 75% SW Extra  
Fine Merino, 25% Silk; 437yd/  
400m; 100g/3.25oz Color:  
Aztec Gold

## NEEDLES

US 2.5/3.00mm &  
US 1/2.25mm 32"/82cm  
circular needles, OR SIZE TO  
OBTAIN GAUGE

## NOTIONS

30 g of Miyuki glass beads size  
6/0, 14 stitch markers, bead  
needle, tapestry needle  
sew-on magnetic snap size  
5/8"/14mm

## GAUGE

26 sts & 36 rows = 4"/10cm  
over Stockinette St pattern  
using US 2.5/3.00mm & 36 sts  
& 60 rows = 4"/10cm over  
Dragon Scale stitch pattern  
using US 2.5/3.00mm

## SKILL LEVEL

Intermediate





## Abbreviations

.....repeat instructions following the single asterisk as directed

**BO**.....bind off

**CO**.....cast on

**k**.....knit

**k2tog**.....knit 2 sts together

**p**.....purl

**PB**.....Place Bead (see Special Techniques)

**pm**.....place marker

**p2tog**.....purl 2 sts together

**rep**.....repeat

**RS**.....right side

**sm**.....slip marker

**st/sts**.....stitch/stitches

**ssk**..... slip, slip, knit: slip 2 sts knitwise, 1 at the time to right-hand needle. Insert the left-hand needle into the fronts of these 2 stitches and knit them together.

**WS**.....wrong side

**yo**.....yarn over

## Special techniques

**Double Cast On; the Thumb method** = Watch my [DRAGON SHAWL CAST ON: THE THUMB METHOD TUTORIAL](#) on YouTube.

**Place Bead** = for this design you bead is place in-between two stitches on the same row, on RS. Just simply slide a bead as close as possible to a stitch just made, then work next stitch as directed in pattern, also as close as possible to a bead. Bead will "nest" in-between two stitches. *Video tutorial for the techniques above is available on Alexandra Davidoff Studio Youtube channel: <https://youtu.be/xk0YFf3AbGs>*

## Instructions

Thread 120 beads to your yarn prior to work. With larger needle and using regular Long Tail Cast On, CO 18 sts, do not join; work back and forth in rows. Begin [Dragon Scales Pattern](#) and chart.

[Dragon Scale Pattern](#) (chart)

**Row 1 (RS):** p2tog, p6, yo, p2, yo, p6, p2tog.

**Row 2 (WS):** ssk, k5, yo, k4, yo, k5, k2tog.

**Row 3:** p2tog, p4, yo, p6, yo, p4, p2tog.

**Row 4:** ssk, k3, yo, k8, yo, k3, k2tog.

**Row 5:** p2tog, p2, yo, p10, yo, p2, p2tog.

**Row 6:** ssk, k1, yo, k12, yo, k1, k2tog.

**Row 7:** p2tog, yo, p14, yo, p2tog.

Without turning work, using [Cast On: The Thumb Method](#), CO 9 sts. Now you have 27 sts. Turn work. *Note: use this cast on method through the rest of the project.*

**Row 8 (WS):** knit all sts to end.

Without turning work, CO 9 sts. Now you have 36 sts. Turn work.

**Row 9:** p2tog, p6, yo, p1, **pm**, \* p1, yo, p6, p2tog, **PB**, p2tog, p6, yo, p1, **pm**; rep from \* to last 9 sts, p1, yo, p6, p2tog.

**Row 10:** ssk, k5, yo, k2, \* k2, yo, k5, k2tog, ssk, k5, yo, k2; rep from \* to last 9 sts, k2, yo, k5, k2tog.

**Row 11:** p2tog, p4, yo, p3, \* p3, yo, p4, [p2tog] twice, p4, yo, p3; rep from \* to last 9 sts, p3, yo, p4, p2tog.

**Row 12:** ssk, k3, yo, k4, \* k4, yo, k3, k2tog, ssk, k3, yo, k4; rep from \* to last 9 sts, k4, yo, k3, k2tog.

**Row 13:** p2tog, p2, yo, p5, \* p5, yo, p2, [p2tog] twice, p2, yo, p5; rep from \* to last 9 sts, p5, yo, p2, p2tog.

**Row 14:** ssk, k1, yo, k6, \* k6, yo, k1, k2tog, ssk, k1, yo, k6; rep from \* to last 9 sts, k6, yo, k1, k2tog.

**Row 15:** p2tog, yo, p7, \* p7, yo, [p2tog] twice, yo, p7; rep from \* to last 9 sts, p7, yo, p2tog.

Without turning work, CO 9 sts. Now you have 45 sts. Turn work.

**Row 16:** knit all sts to end.

Without turning work, CO 9 sts. Now you have 54 sts. Turn work.

**Row 17:** p2tog, p6, yo, p2, yo, p6, p2tog, \* **sm**, **PB**, p2tog, p6, yo, p2, yo, p6, p2tog; rep from \* to end.

**Row 18:** \* ssk, k5, yo, k4, yo, k5, k2tog; rep from \* to end.

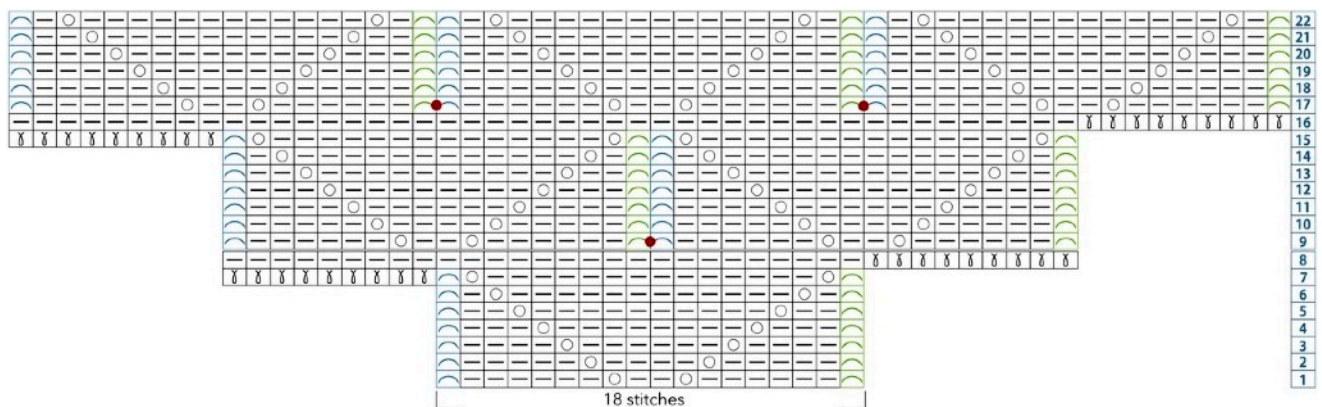
**Row 19:** \* p2tog, p4, yo, p6, yo, p4, p2tog; rep from \* to end.

**Row 20:** \* ssk, k3, yo, k8, yo, k3, k2tog; rep from \* to end.



Row 21: \* p2tog, p2, yo, p10, yo, p2, p2tog; rep from \* to end.

Row 22: \* ssk, k1, yo, k12, yo, k1, k2tog; rep from \* to end.



- RS: purl; WS: knit
- RS: p2tog; WS: k2tog (k2tog = knit 2 sts together)
- RS: p2tog; WS: ssk (ssk = slip, slip, knit)
- yo (yarn over)
- cast on stitch, the Thumb method
- bead placement



## Notes

- I do suggest to use a row counter to keep your work on the right track.
- Increasing and decreasing is done on both RS and WS.
- Stitches should be firm, not loose. Adjust needle size if needed.
- Purl side is RS. Beads are placed on RS in-between two stitches (see pictures).
- Rows on which beads are placed hightailed in **red**.
- I am using Vogue Knitting The Ultimate Knitting Book as a reference (see below).

## References

The Editors of Vogue Knitting Magazine (2018) *Vogue Knitting The Ultimate Knitting Book*. New York: Sixth&Spring Books.



Continue with [Dragon Scale Pattern](#) all through Row 120. From this point on use written instruction only. *Note: Place markers (pm) as directed, if marker is already in place from previous row, just slip marker and continue work as directed.*

**Row 23:** \* p2tog, yo, p14, yo, p2tog; rep from \* to end.

Without turning work, CO 9 sts. Now you have **63** sts. Turn work.

**Row 24:** knit all sts to end.

Without turning work, CO 9 sts. Now you have **72** sts. Turn work.

**Row 25 - 31:** rep rows 9 - 15.

Without turning work, CO 9 sts. Now you have **81** sts. Turn work.

**Row 32:** knit all sts to end.

Without turning work, CO 9 sts. Now you have **90** sts. Turn work.

**Row 33 - 39:** rep rounds 17 - 23.

Without turning work, CO 9 sts. Now you have **99** sts. Turn work.

**Row 40:** knit all sts to end.

Without turning work, CO 9 sts. Now you have **108** sts. Turn work.

**Row 41 - 47:** rep rows 9 - 15.

Without turning work, CO 9 sts. Now you have **117** sts. Turn work.

**Row 48:** knit all sts to end.

Without turning work, CO 9 sts. Now you have **126** sts. Turn work.

**Row 49 - 55:** rep rows 17 - 23.

Without turning work, CO 9 sts. Now you have **135** sts. Turn work.

**Row 56:** knit all sts to end.

Without turning work, CO 9 sts. Now you have **144** sts. Turn work.

**Row 57 - 63:** rep rows 9 - 15.

Without turning work, CO 9 sts. Now you have **153** sts. Turn work.

**Row 64:** knit all sts to end.

Without turning work, CO 9 sts. Now you have **162** sts. Turn work.

**Row 65 - 71:** rep rows 17 - 23.

Without turning work, CO 9 sts. Now you have **171** sts. Turn work.

**Row 72:** knit all sts to end.

Without turning work, CO 9 sts. Now you have **180** sts. Turn work.

**Row 73 - 79:** rep rows 9 - 15.

Without turning work, CO 9 sts. Now you have **189** sts. Turn work.

**Row 80:** knit all sts to end.

Without turning work, CO 9 sts. Now you have **198** sts. Turn work.

**Row 81 - 87:** rep rows 17 - 23.

Without turning work, CO 9 sts. Now you have **207** sts. Turn work.



## Special techniques

**Blocking** = I recommend steam blocking (p.187). Steam the finished piece on RS and WS and gently shape each Dragon Scale and pin each one to the blocking mat. Fold "teeth" on both slanted sides to WS. Watch my tutorial on **Alexandra Davidoff Studio** YouTube channel: <https://youtu.be/RbLfkgsPozA>

**Tassel** = I recommend Tassel with shank (p.332). Step1: wrap yarn around a piece of cardboard that is 3"(8cm) in length. Thread a double strand of yarn under the wraps and tie it at the top, leaving a long end. Step 2: cut yarn at lower edge. Wrap the long end of yarn around upper edge and thread the yarn through the top. Leave 6"(15cm) tale at the top and thread 5 -6 beads through it. Embellish tassel with beads over upper edge.



**Row 88:** knit all sts to end.

Without turning work, CO 9 sts. Now you have 216 sts. Turn work.

**Row 89 - 95:** rep rows 9 - 15.

Without turning work, CO 9 sts. Now you have 225 sts. Turn work.

**Row 96:** knit all sts to end.

Without turning work, CO 9 sts. Now you have 234 sts. Turn work.

**Row 97 - 103:** rep rows 17 - 23.

Without turning work, CO 9 sts. Now you have 243 sts. Turn work.

**Row 104:** knit all sts to end.

Without turning work, CO 9 sts. Now you have 252 sts. Turn work.

**Row 105 - 111:** rep rows 9 - 15.

Without turning work, CO 9 sts. Now you have 261 sts. Turn work.

**Row 112:** knit all sts to end.

Without turning work, CO 9 sts. Now you have 270 sts. Turn work.

**Row 113 - 119:** rep rows 17 - 23.

Turn work.

**Row 120:** knit all sts to end.

Change to smaller circular needle, continue working back and forth in rows. From this point you will start creating **Moss Stitch Edge** on both sides and at the top (indicated in blue color for easy pattern reading) together with the last set of 15 Dragon scales. The number of 270 stitches will stay consistent until the end (no more additional COs of 9 sts on the sides). Keep stitch markers in place until further instructions. Row on which beads are placed hightailed in red.

**Row 121:** \* k1, yo, p6, p2tog, PB, p2tog, p6, yo, p1; rep from \* to end.

**Row 122:** \* p1, k1, yo, k5, k2tog, ssk, k5, yo, p1, k1; rep from \* to end.

**Row 123:** \* k1, p1, k1, yo, p4, [p2tog] twice, p4, yo, p1, k1, p1; rep from \* to end.

**Row 124:** \* [p1, k1] twice, yo, k3, k2tog, ssk, k3, yo, [p1, k1] twice; rep from \* to end.

**Row 125:** \* [k1, p1] twice, k1, yo, p2, [p2tog] twice, p2, yo, [p1, k1] twice, p1; rep from \* to end.

**Row 126:** \* [p1, k1] 3 times, yo, k1, k2tog, ssk, k1, yo, [p1, k1] 3 times; rep from \* to end.

**Row 127:** \* [k1, p1] 3 times, k1, yo, [p2tog] twice, yo, [p1, k1] 3 times, p1; rep from \* to end.



*Remove stitch markers during next row.*

Row 128: \* p1, k1; rep from \* to end.

Row 129: \* k1, p1; rep from \* to end.

Row 130: rep row 128.

Row 131: rep row 129.

Row 132: rep row 128

Row 133: rep row 129.

**Finishing:** BO all stitches in established pattern. Weave in ends. Block piece by gently shaping each Dragon scale into 3D shape and pinning it to blocking mat (see [Special Techniques](#) and picture tutorial).

After completing blocking, hand-stitch sew-on magnetic snaps on each end of your scarf neckless over Moss Stitch Edge so that those ends overlap. Take finished tassel (optional) and sew it on to the top overlapping edge of your scarf neckless just below the magnetic snap. (see picture tutorial). Enjoy!



