



Make in Color

MAKE IN COLOR

Live life brighter

**KNIT
GRAFFITI**

Designs



Choose the perfect color combo for your handmade projects every time!

BY LESLEY ANNE ROBINSON

CLASS OVERVIEW:

Welcome, and thank you for signing up for my class!

Do you feel like you always doubt your color choices with your projects, especially when it comes to combining colors together for stripes, stranded color-work and brioche knitting? Quilting, embroidery or other fiber projects? It can feel very overwhelming and stressful, especially if you are shopping and need to make a decision in the store. In this class, I will be sharing all of my color theory expertise, where to start when choosing colors for your projects, and a surefire way to make sure you will LOVE your finished objects without the guessing game. If there is time, we might even take a little shopping trip in the store or vendor hall (depending on where the class is held)!



PATTERN: HONEY, I SHRUNK THE STASH

CLASS OUTLINE:

Introduction to basic color theory - the quick way to learn!

Color wheels and how to understand them.

Choosing the right yarn and colors for your project, share your choices!

What are YOUR colors? Favorites, colors you always gravitate towards, look the best on you!

3 color combinations for swatching: We are going to knit / crochet a bunch of tiny swatches together, your choice of stitch pattern! This is the best way to see if your colors are going to work for your project.

Different knit swatch instructions begin on Page 3. I did not include crochet instructions, but feel free to use whatever technique you would like.

MATERIALS:

» Yarn or other fiber:

Yarn: At least 6 different balls or skeins of yarn, 3 different color combinations for swatching. Any yarn weight that you are comfortable with. Leftovers work great!!

Other Fiber: Fabric scraps, thread for sewing, embroidery floss, dye combinations (if you want to dye your own yarn), etc.

» Needles:

Circular or interchangeable needles between sizes US 3 - US 6 / 3.25mm - 4.0mm - basically something to swatch with.

Crochet hook in preferred size.

» Tools:

Tapestry needle for weaving in ends, needle for sewing / embroidery if using fabric, row counter or preferred method for keeping track of where you are in pattern

» Gauge:

Gauge will vary depending on yarn weight and needle / hook size. I will be going over how to measure gauge.

BASIC COLOR THEORY:

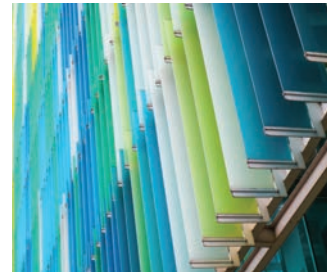
When you start to combine colors together for a project, you want to think about the contrast they will have together as well as what blending them together will look like. One thing I love to do is take a black and white photograph of my yarns / fabrics together, this shows me the value of each color. Two yarns / fabrics can be completely different colors, but they can have the same value!

Here is a start to show you some color theory that will help you in choosing colors for your projects! These will almost guarantee that your colors will blend well together and be pleasing to the eye.

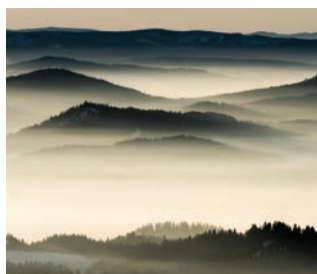
Complimentary: Any two colors which are directly opposite each other on the color wheel, such as light blue and apricot orange / rust red and sage green / yellow and purple.



Analogous: Any three colors which are side by side on a 12-part color wheel, such as turquoise, purple and blue-purple / yellow, yellow-orange and orange / yellow-green, green, and turquoise.



Monochromatic: Tints and shades of one color or tone, such as lighter and darker versions of red. Think about if you were painting and you added white to red, it would be a pink tone. If you added black, it would be a wine tone. But they would still have the same base of red.



Color Theory: <https://www.colormatters.com/color-and-design/basic-color-theory>

This website above will give you a basic understanding of Color Theory, which I am also going over in today's class. I could talk about colors all day; it is one of my absolute favorite phases of my design process. Playing with color combinations brings me so much joy, but I know it can also be a source of stress for some people who are not as familiar with what colors will look like together. The easiest way for me to choose colors is to begin with one, then go from there.

Other sources for color inspiration can be found in a favorite inspirational photo, nature, Pinterest, art, or even your favorite color in different tones.

IMPORTANT BRIOCHE FACTS TO REMEMBER:

It may take a few rows to distinguish the stitch pattern.

All slipped stitches are slipped purl-wise, except when decreasing.

When knitting Two-Color brioche flat, every TWO knit rows are equal to ONE completed brioche row. In Two-Color Brioche, you will work through the row first with the Main Color, and then drop the Main Color yarn, and work the row again, completing the row with the Contrast Color. This means that brioche knitting uses extra yarn, up to twice as much as other stitch patterns.

Each slipped stitch with its yarn over is counted as ONE stitch.

When counting rows / rounds in brioche, just count the knit stitches (looks like a “V”) on the Main Side of work.

Lifelines are a Lifesaver!!!

One-color brioche in the round is a bit different than knitting it flat, and is a great transition to Two-color brioche.

BRIOCHE CHEATS:

If you can't remember which color you just worked, simply look at the yarn overs you created! That is the color you just worked.

Place a stitch marker to note the MS of work, and to help you remember where you left off. This is especially helpful with One-Color Brioche, as both sides can look identical.

Is your MC yarn at one end, and your CC yarn at the other? That means you just worked a row with your MC yarn! Do not turn your work, keeping your MC yarn at the left and your CC yarn at the right. Complete the row by working it with your CC yarn.

CASTING ON & BINDING OFF:

My favorite Cast On and Bind Off techniques (methods used in pattern):

Twisted German / Old Norwegian Cast On. Link to video tutorial of cast on technique:
<http://bit.ly/TwistedGermanCO>

Elastic Bind Off Method. See a great video tutorial for this bind off method here:
<http://bit.ly/ElasticBO>



PATTERN: CURRENT MOOD



PATTERN: PARLOUR

ABBREVIATIONS:

BO : Bind off
Brk : Brioche knit (bark); knit stitch together w/ its yarn over
Brp : Brioche purl (burp); purl stitch together w/ its yarn over
CC : Contrast color
CO : Cast on
CS : Contrast Side
K : Knit
K2tog : 1-st dec, slanting right; Knit 2 sts together
LH : Left hand
MC : Main Color
MS : Main Side
P : Purl
Rep : Repeat
RS : Right side
Sl : Slip st/s purl-wise (unless otherwise instructed)

Slide : Do not turn work, slide work to other end of needle
Sl1yof : Leaving the working yarn in front, slip stitch purl-wise, then bring yarn over and across the stitch, then back to the front, ready for next brp or p
SM : Slip marker as encountered
St/s : Stitch/es
Tbl : Through back loop(s)
WS : Wrong side
Wyib : With working yarn in back of work
Wyif : With working yarn in front of work
Yf : Yarn forward
Yf sl1yo : Bring yarn under right needle to front of work, slip next stitch purl-wise, then bring yarn over needle and across slipped stitch to back of needle, ready for next brk or k
Yo : Yarn forward and over needle to the back

PATTERN FOR GARTER SWATCH:

» Cast on:

Using yarn color of choice and the Twisted German Cast On method, cast on 25 stitches.
Turn to work RS row.

Video Tutorial: <http://bit.ly/TwistedGermanCO>

Row 1 (RS): K to last st, sl1 wyif.

Row 2 (WS): K to last st, sl1 wyif.

Repeat [Rows 1 - 2] until your swatch or project is desired length, striping in as many different colors as you'd like.

» Begin binding off:

Using current yarn, BO all sts using the Elastic Bind Off method as follows: K2, (sl 2 sts purlwise back to LH needle, k2tog tbl, k1) rep until 3 sts remain, sl 2 sts purlwise back to LH needle, K2tog tbl. Break yarn and pull end through last loop, pulling tight to close.

Video Tutorial: <http://bit.ly/ElasticBO>

PATTERN FOR STOCKINETTE SWATCH:

» Cast on:

Using yarn color of choice and the Twisted German Cast On method, cast on 25 stitches.
Turn to work RS row.

Video Tutorial: <http://bit.ly/TwistedGermanCO>

Row 1 (RS): K to last st, sl1 wyif.

Row 2 (WS): K1, p to last st, sl1 wyif.

Repeat [Rows 1 - 2] until your swatch or project is desired length, striping in as many different colors as you'd like.

» Begin binding off:

Using current yarn, BO all sts using the Elastic Bind Off method as follows: K2, (sl 2 sts purlwise back to LH needle, k2tog tbl, k1) rep until 3 sts remain, sl 2 sts purlwise back to LH needle, K2tog tbl. Break yarn and pull end through last loop, pulling tight to close.

Video Tutorial: <http://bit.ly/ElasticBO>

PATTERN FOR BRIOCHE SWATCH:

» Cast on:

Using MC yarn and the Twisted German Cast On method, cast on 15 stitches. Turn to work CS row.

Video Tutorial: <http://bit.ly/TwistedGermanCO>

» Notes:

If you prefer charted instructions, please refer to Chart A on Page 6. Otherwise, continue with written instructions below.

Setup Row CS MC: (Purl 1, sl1yof) repeat to last stitch, purl 1. Slide.

Setup Row CS CC: Join CC yarn. Slip 1 stitch purl-wise with working yarn in back, (brk1, yf sl1yo) repeat to last 2 stitches, brk1, slip 1 stitch purl-wise with working yarn in back. Turn.

Row 1 MS MC: Knit 1, yf sl1yo, (brk1, yf sl1yo) repeat to last stitch, knit 1. Slide.

Row 1 MS CC: Slip 1 stitch purl-wise with working yarn in front, (brp1, sl1yof) repeat to last 2 stitches, brp1, slip 1 stitch purl-wise with working yarn in front. Turn.

Row 2 CS MC: Purl 1, sl1yof, (brp1, sl1yof) repeat to last stitch, purl 1. Slide.

Row 2 CS CC: Slip 1 stitch purl-wise with working yarn in back, (brk1, yf sl1yo) repeat to last 2 sts, brk1, slip 1 stitch purl-wise with working yarn in back. Turn.

Repeat [Rows 1 - 2 MC & CC] until your swatch or project is desired length.

» Begin binding off:



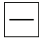




Break CC yarn. Using MC yarn, BO all sts using the Elastic Bind Off method as follows: Brk1, k1, (sl 2 sts purlwise back to LH needle, k2tog tbl, brk1, sl 2 sts purlwise back to LH needle, k2tog tbl, k1) rep until 3 sts remain, sl 2 sts purlwise back to LH needle, K2tog tbl, k1, sl 2 sts purlwise back to LH needle, K2tog tbl. Break yarn and pull end through last loop, pulling tight to close.

Video Tutorial: <http://bit.ly/ElasticBO>



PATTERN: BRIOCOMFORT SHAWL

» Chart Key:

-  sl st purl-wise wyif on MS / wyib on CS
-  k on MS / p on CS
-  p on MS / k on CS
-  brk on MS / brp on CS
-  brp on MS / brk on CS
-  yf sl1yo / sl1yof
-  indicates stitch pattern repeat

» Two-Color Brioche charts:

Are you a chart knitter? I love following charts, they are much easier for me than written instructions. But I know that's not true for everyone. I would like to go over the chart symbols for brioche knitting as I think it's important to teach, but it is not required that you follow. Not only is Two-Color Brioche a different written language, the chart language is also something completely new.

Be sure to read through the written instructions thoroughly.

Read the charts as to work the swatch flat: all odd numbered rows (MS rows) will be read from right to left; all even numbered rows (CS rows) will be read from left to right. Arrows indicating direction of chart reading are provided.

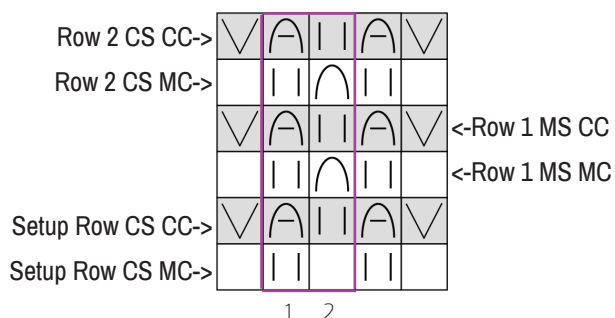
The MC rows are white, and the CC rows are gray.

The hot pink outline shows the repeat of the stitch pattern in both charts.

When reading brioche charts with increases and decreases, it can be helpful to highlight the symbols using different colors! Blue for the “brkyobrk”, purple for the “brRsl dec”, etc.

Chart A

Two-Color Brioche Swatch



FINISHING:

Weaving in ends in your project!

Questions? Ask away! Please feel free to email me anytime with questions or concerns. I have included my email address on Page 8 of this handout.

» Note about blocking:

Washing and blocking your finished object can tend to open up the fabric quite a bit. Be careful not to tug on your stitches, just smooth out any inconsistencies. Be careful when washing a finished object that uses a lot of different colors. I use color catcher sheets to help absorb, as well as washing in cold water. If you're worried about your colors running, wash and block a swatch first. That will help you to see what the colors will do. I highly recommend washing your finished object in cool water with a mild detergent (I love to use Eucalan) and gently pressing it into a towel to absorb most of the water. Lay flat on a blocking mat, or whatever you use for blocking. A light blocking may be all your new object needs. Always remember to block your swatches exactly how you're going to block your finished object!

» Resources:

Online color wheel: <https://color.adobe.com/create/color-wheel>

Color Theory and Color Wheels: <https://www.canva.com/colors/color-wheel/>

More Color Theory for Beginners: <https://sarahrenaclark.com/color-theory-basics>

Color Palette Generator: <https://coolers.co/>

Stock Photos: <https://stock.adobe.com/>

Free Stock Photos: <https://unsplash.com/>

Take my online course, [Mastering Brioche with Knit Graffiti!](#)

Link: <https://knitgraffiti.com/online-courses/>

Take my Craftsy class, [Modern Brioche Lace!](#)

Link: <https://www.craftsy.com/class/modern-brioche-lace/>

Check out my first book, [Brioche Knitting for Beginners and Beyond](#):

Link: <https://knitgraffiti.com/books/>

Nancy Marchant: www.briochestitch.com

Thank you so much for taking my class, and happy making!



PATTERN: PARLOUR

PATTERNS YOU MAY ENJOY:



Parlour



Honey, I Shrunk the Stash

CONNECT:



WEBSITE



RAVELRY



INSTAGRAM



FACEBOOK



YOUTUBE



NEWSLETTER

» Sharing is Caring!

If you love to share your projects on social media, please tag them with **#KnitGraffitiDesigns!**

» Information:

Sign up for **Knit Graffiti News** to receive monthly emails about exciting announcements, exclusive discounts on new patterns, Lesley's teaching schedule, and much more!

Join Knit Graffiti on Patreon! <https://patreon.com/knitgraffiti>

This class outline and patterns are for personal use only. All rights are reserved.

For pattern support or any questions, please email Lesley@knitgraffiti.com.